



NRI COLLEGE OF PHARMACY

(Run by Sri Durga Malleswari Educational Society)

(Approved by AICTE & PCI - New Delhi: Affiliated to JNTUK, Kakinada)

Pothavarappadu (V), (Via) Nunna, Agiripalli (M), Krishna District, A.P., Pin: 521 212, cell: 9394686868

2.5.1 Evaluation Process and Reforms:

As NRIP is affiliated to JNTU, Kakinada follows the academic regulations forwarded by the university norms. The regulations include internal and external assessment procedures as well as minimum attendance requirement for the students to attend end semester examinations.

Internal assessment for theory courses is carried out by conducting Two Mid-term examinations. Each Mid-term consists of an objective, descriptive and assignments levels as per university norms. A common question paper for descriptive test is prepared by the subject experts. The evaluation of exam scripts done by faculty and verified by the students within the allotted time. The Mid-term marks statement was displayed in the notice board before uploading it to the university.

The internal assessment of laboratory done on basis of regularity/record/viva, conducted for 15 marks in the internal test. The external end examination shall be conducted for 35 marks by the concerned internal laboratory faculty and an external senior expert in the subject from the same department. The final laboratory internal marks statement is displayed in the notice board.

Seminars and projects are also transparently assessed by the faculty assessed to evaluate the presentation skills of the students with the help of rubrics. Project Review Committee (PRC) is constituted along with the head of the department, senior faculty and respective guides. Project reviews are conducted for continual assessment of the progress made by the students periodically. The evaluation results and remarks of the review proceedings are shared with the respective student batches.

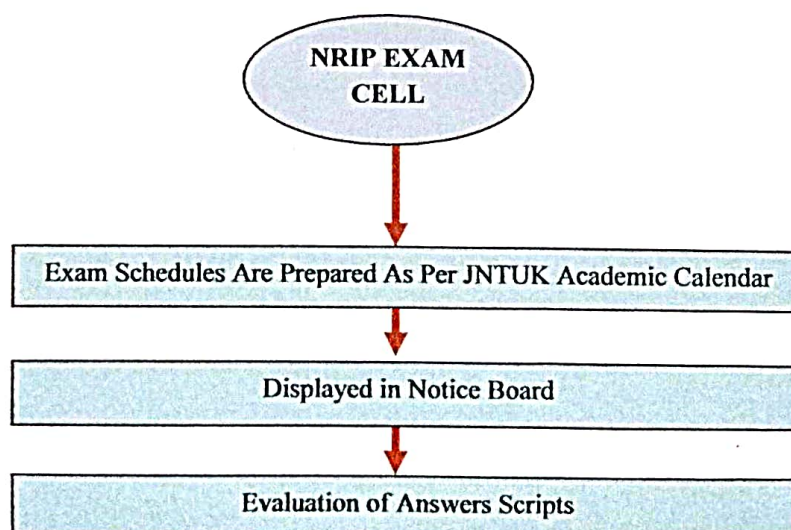
The Internal Quality Assurance Cell (IQAC) plays an important role in maintaining quality and transparency in conducting examinations and continuous internal assessment with fair. Any discrepancy or deviation identified is immediately brought to the notice of the Officer In-Charge of Examinations.

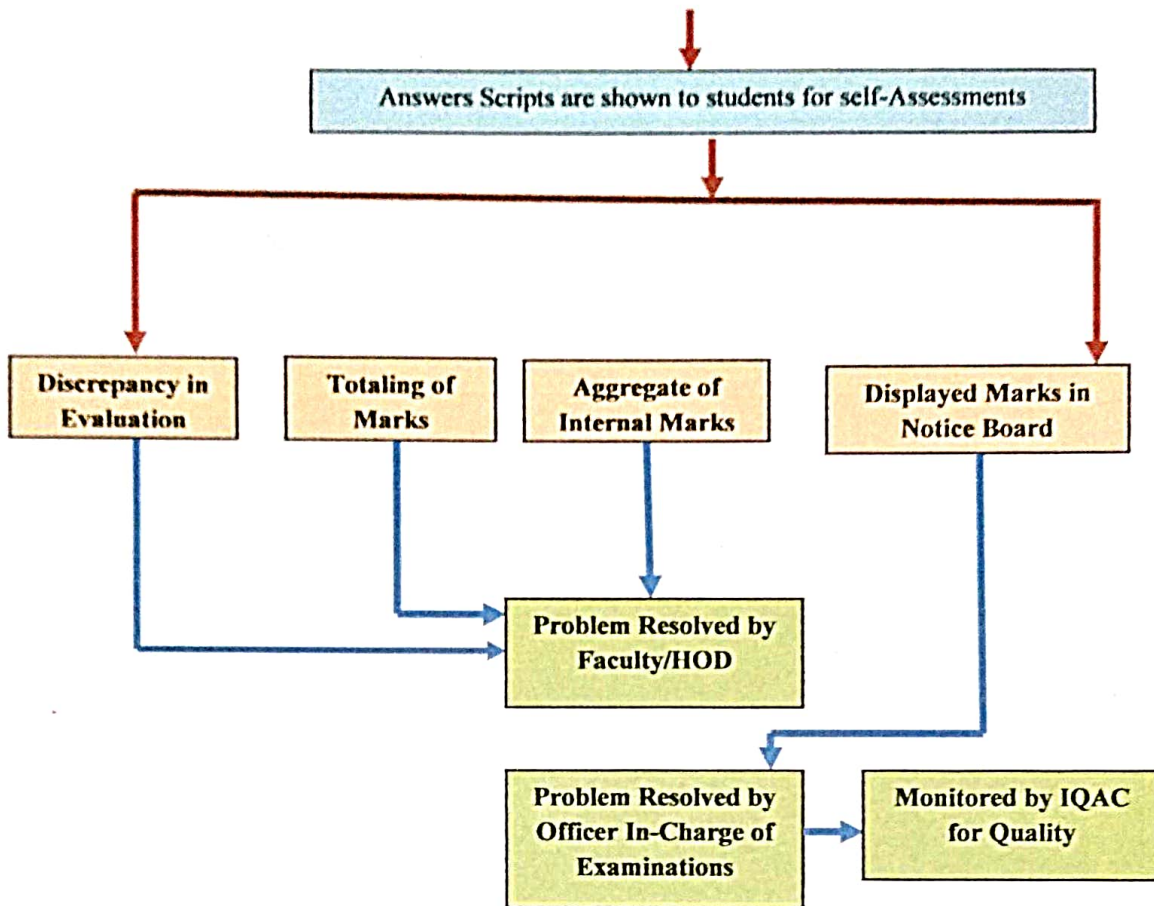
NRIP ensures that there is complete transparency in the internal examination related grievances. The internal examination schedules are prepared as per the academic calendar given by JNTUK and are informed to the students well in advance. The internal examination answer sheets are evaluated by concerned subject faculty within three days from date of the examination. The assessed internal test papers are shown to the students for self assessment.

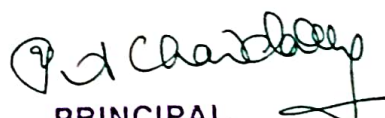
The general grievances expressed by the students with regard to internal examinations are:

- Dissatisfaction regarding evaluation of the descriptive answer scripts
- Discrepancy in totaling of the marks
- Wrong posting in mark sheets
- Discrepancy in totaling of aggregate internal marks
- Wrong options in objective question paper

Often, some of the issues such as discrepancies in evaluation or totaling, the students bring it to the notice of the faculty that is resolved immediately. Any student who is still not satisfied with the assessment and award of marks may approach the concerned head of the department. If the student is still dissatisfied, he/she can represent his/her grievance to the Principal for necessary action.






PRINCIPAL
NRI College of Pharmacy
POTHAVARAPPADU (V)
Aqiripalli (M), Krishna District